

For Your own Safety

TEAM range complies with the current safety norms, and in particular:

2006/42/CE Machine Directive

2014/35/UE Low Voltage Directive

2014/30/UE EMC Directive

2011/65/RoHS

CEI EN 60947-4-1 Low voltage switch gear

CEI EN 60529 Specification for IP code

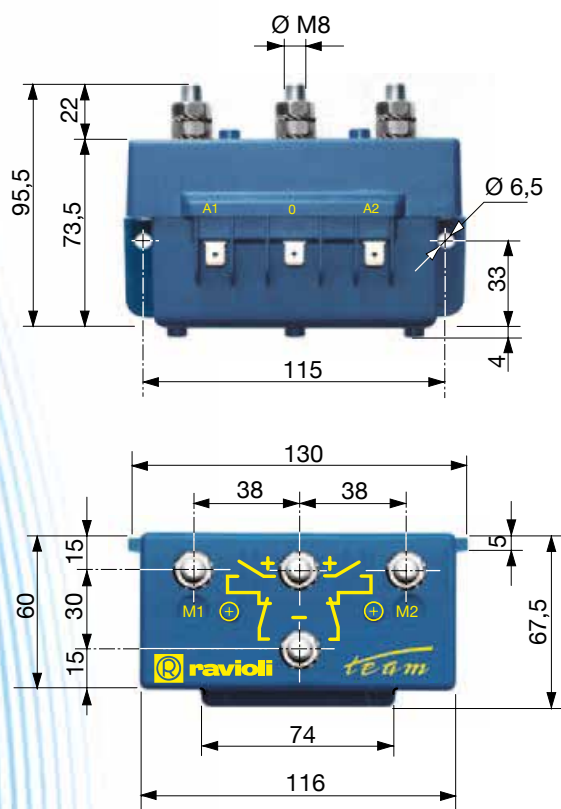
Guaranteed Quality Product

The range of TEAM is guaranteed by our EC Certificate of Conformity, available on request, in which it is declared that such product was created by RAVIOLI in accordance to defined and recognised Safety Regulations, and in compliance with the Quality standards stated in our ISO 9001:2000 Quality System Certificate.

Installation and wiring instructions

TEAM motor reversers must be installed by a qualified staff, according to current safety laws. Electrical current must be switched off before wiring. Use suitable cables according to the usage current in order to have a better loss of heat. Assure that power cables terminals are suitably locked with nuts with max clamps torque of 4 Nm. Assembling can be carried out through screws M6. **Working position: either horizontal or vertical axis. If vertical axis, exclusively with poles set upwards.** Operating temperature -25°C+40°C

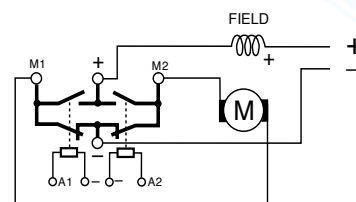
Dimensions



Diagrams of functioning

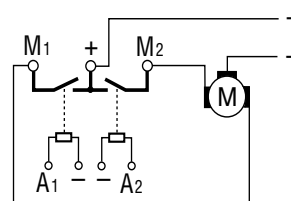
D.C. shunt motor reversing

E TE 106 C
E TE 156 C



Permanent magnet motor reversing

E TE 106
E TE 156



The lines — represent the links the motor reverser provides inside.

RAVIOLI S.p.A. declines any responsibility for damage deriving from incorrect installation or use of the product.