

Technical Sheet

D.C. Motor Reversers type TEAM

Main Features

The range of TEAM monobloc motor reversers is particularly suitable for traction and handling machinery in d.c. like: services on board ships, sweepers and industrial cleaning machines, vehicles for road and rail transport.

The motor reversers TE106CN / TE156C, i.e. 2 single-pole contactors 1 NO 1 NC joint together, and TE106N / TE156, i.e. 2 single-pole contactors 1 NO joint together, are provided with internal electric connections.

The result is a compact and completely protected product.

Coils

D.c. coils are provided with terminals with 6 mm connections. Standard duty is intermittent 25%. Maximum working time is 7,5 mins (temporary duty) on 30-mins-long cycle. Normalized voltage is: 12-24 V

Main Contacts

Motor reversers have silver alloy double breaking contacts, resistant to arc, suitable for heavy duty.

NC contacts are not suitable for switching on and off the current.

Integral Protection

The cover is completely protected from oil, water and dust.



Models and part numbers

Types		Codes
TE106N	2x1NO 3 poles	ETE106N
TE106CN	2x1NO 1NC 4 poles	ETE106CN
TE156	2x1NO 3 poles	ETE156
TE156C	2x1NO 1NC 4 poles	ETE156C

Performances

Motor reverser		TE106CN	TE156C	TE106N	TE156
Nominal operating current at 50% intermittent, 300 op/h	I_e NO	120A	150A	120A	150A
Thermal current rating	I_{th} NO	80A	100A	80A	100A
Nominal voltage	U_e	24V	24V	24V	24V
Breaking capacity with 15 ms time constant		400A	450A	540A	575A
Category of usage		DC5	DC5	DC5	DC5
Working voltage limits		0,7-1,1Vn	0,7-1,1Vn	0,7-1,1Vn	0,7-1,1Vn
Coil power dissipation		26W	32W	26W	32W
Mechanical life	op. n.	3×10^6	3×10^6	3×10^6	3×10^6
Main contacts		2x1NO 1NC	2x1NO 1NC	2x1NO	2x1NO

For Your own Safety

TEAM range complies with the current safety norms, and in particular:

2006/42/CE Machine Directive

2014/35/UE Low Voltage Directive

2014/30/UE EMC Directive

2011/65/RoHS

CEI EN 60947-4-1 Low voltage switch gear

CEI EN 60529 Specification for IP code

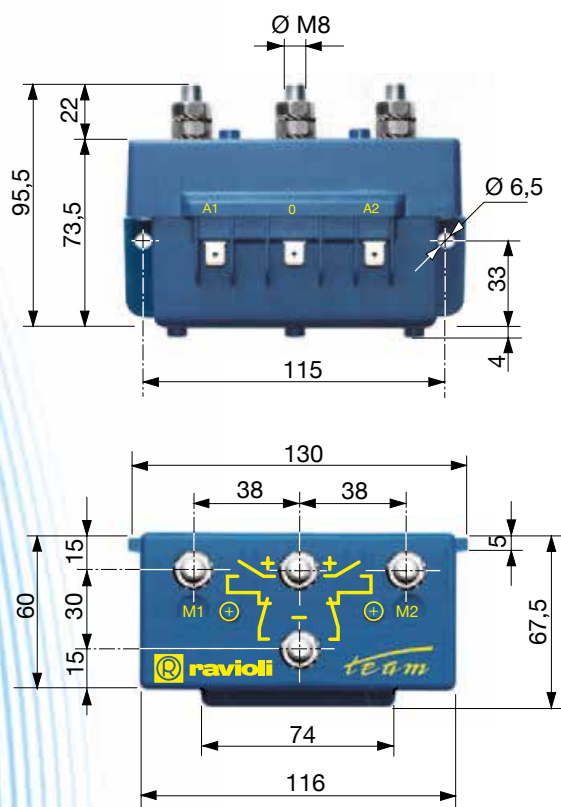
Guaranteed Quality Product

The range of TEAM is guaranteed by our EC Certificate of Conformity, available on request, in which it is declared that such product was created by RAVIOLI in accordance to defined and recognised Safety Regulations, and in compliance with the Quality standards stated in our ISO 9001:2000 Quality System Certificate.

Installation and wiring instructions

TEAM motor reversers must be installed by a qualified staff, according to current safety laws . Electrical current must be switched off before wiring. Use suitable cables according to the usage current in order to have a better loss of heat. Assure that power cables terminals are suitably locked with nuts with max clamps torque of 4 Nm. Assembling can be carried out through screws M6. **Working position: either horizontal or vertical axis. If vertical axis, exclusively with poles set upwards.** Operating temperature $-25^{\circ}\text{C}+40^{\circ}\text{C}$

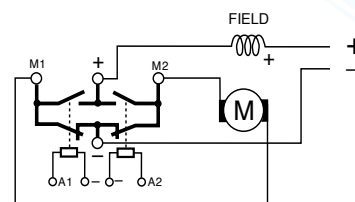
Dimensions



Diagrams of functioning

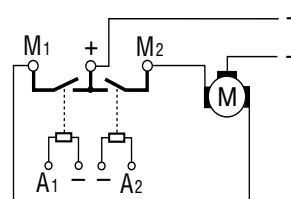
D.C. shunt motor reversing

E TE 106 C
E TE 156 C



Permanent magnet motor reversing

E TE 106
E TE 156



The lines — represent the links the motor reverser provides inside.

RAVIOLI S.p.A. declines any responsibility for damage deriving from incorrect installation or use of the product.